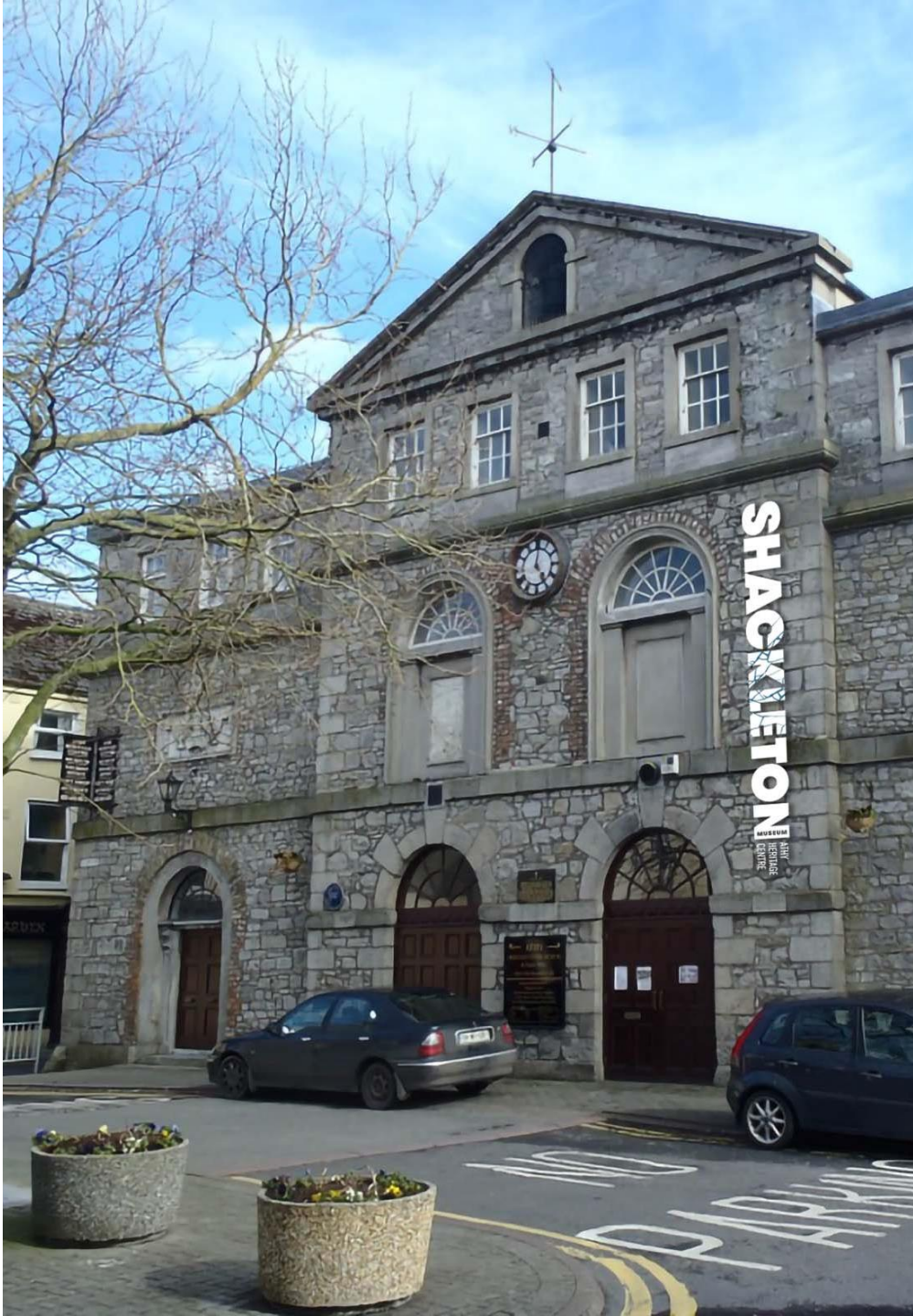


SHACKLETON

Housed in a stunningly restored 300 year old building, Shackleton is destined to become one of the world's great polar museums, and the only one dedicated to the greatest explorer of them all, Ernest Shackleton.

Located in the heritage town of Athy, Co Kildare.



1 - Antarctica Today

TEMPORARY
EXHIBITION
SPACE

2 Second Floor



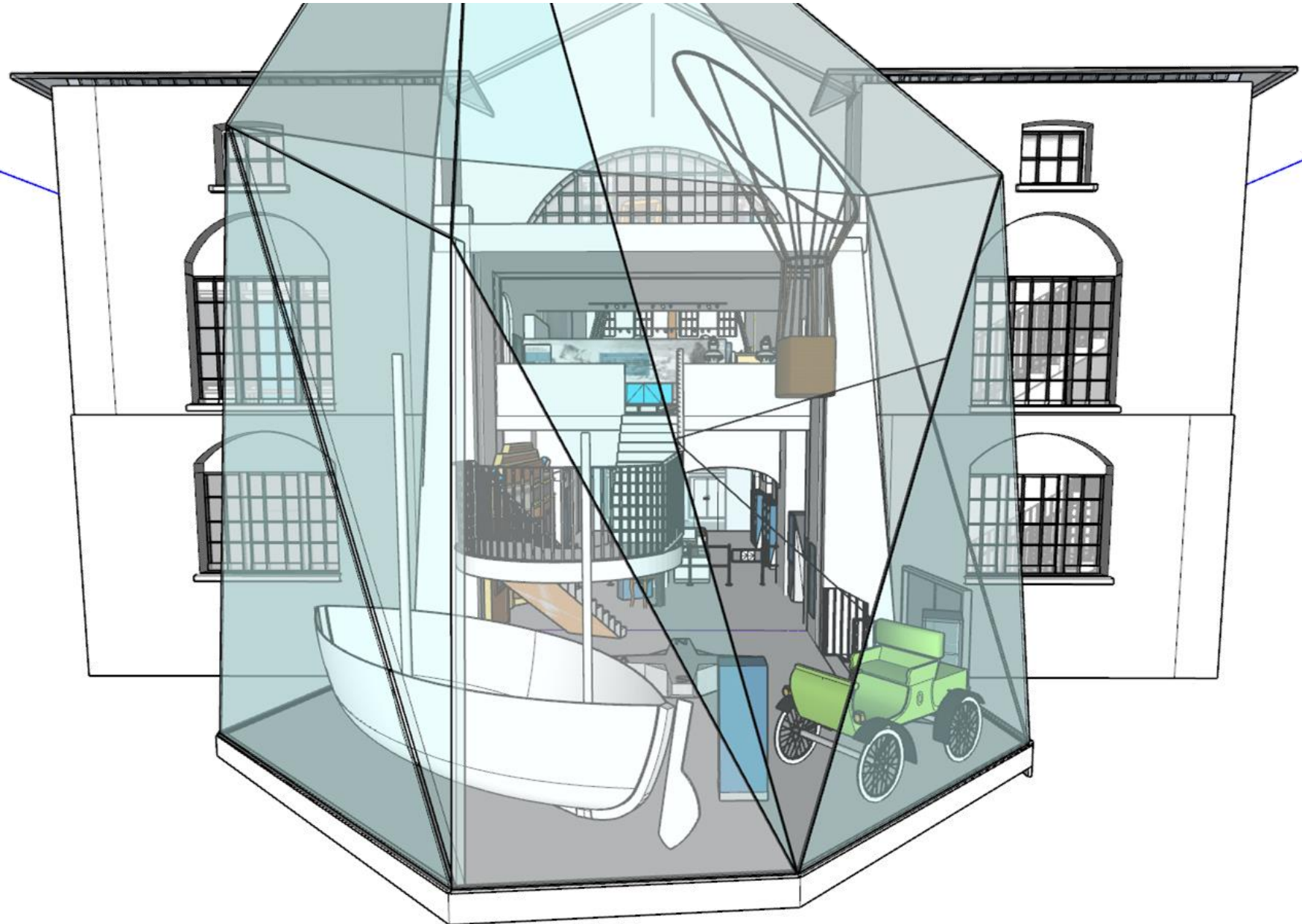
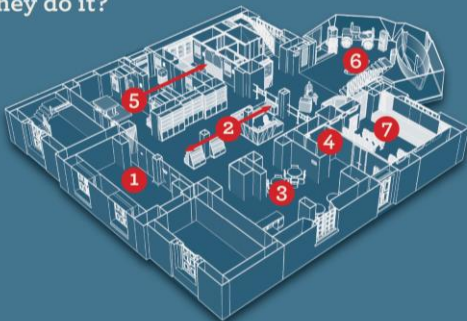
- 1 - First Floor Gallery
- 2 - Early Life
- 3 - Cold Planet
- 4 - The Expeditions
- 5 - Endurance in Ice
- 6 - Prisoners of the Ice
- 7 - The James Caird
- 8 - Back Home
- 9 - Quest
- 10 - Sir Ernest Shackleton

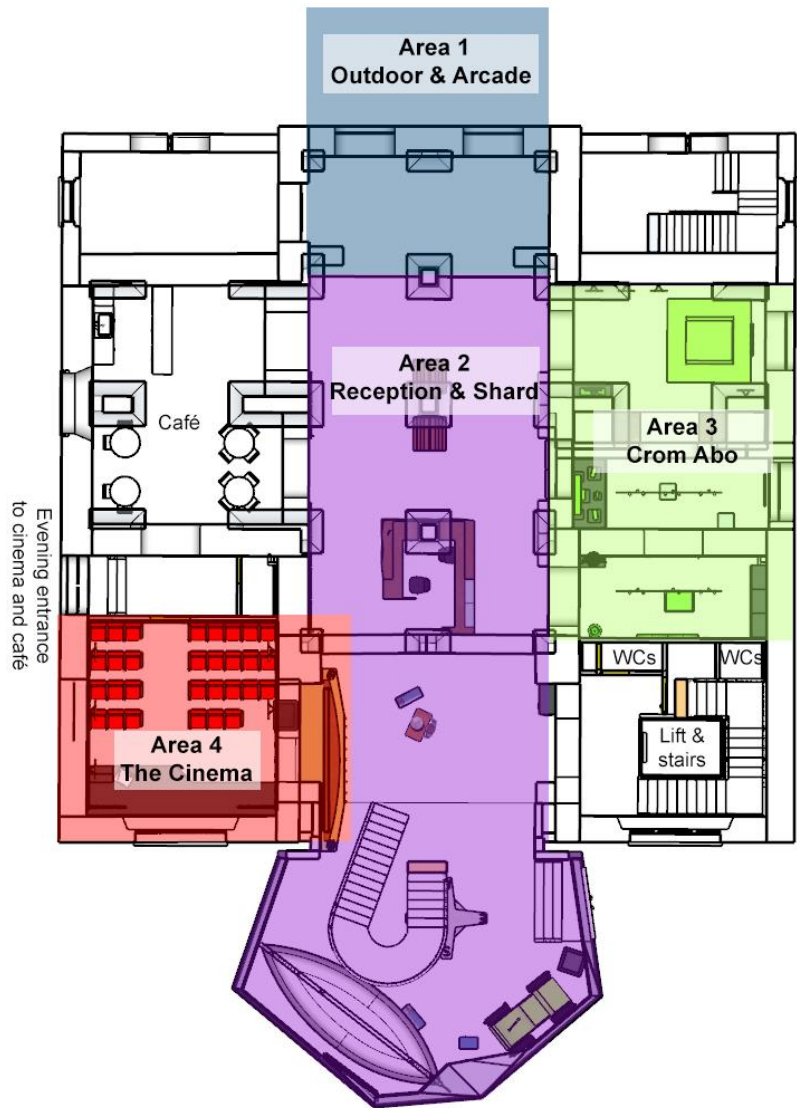
1 First Floor



- 1 - Entrance
- 2 - Reception/Gift Shop
- 3 - Café
- 4 - Toilets
- 5 - Crom Abo!
- 6 - How did they do it?
- 7 - Cinema

G Ground Floor





Ground Floor



First Floor



Second Floor



Beatha thròth
Early Life

1874-1904

Did we get it right?
Getting Going (now)

These men were the first to use the sled to transport supplies to the interior of Antarctica. It was a difficult task, and they had to be very careful not to lose any of the supplies. The sled was made of wood and was pulled by a team of men. It was a very important piece of equipment for the expedition.

It was a very difficult task, and they had to be very careful not to lose any of the supplies. The sled was made of wood and was pulled by a team of men. It was a very important piece of equipment for the expedition.

PICTURES
THE HISTORY



The greatest collection of Shackleton memorabilia in the world – including **'Shackleton's Cabin'**, the actual cabin from *Quest* in which the explorer died on 5 January 1922 on his last expedition to Antarctica.





SHACKLETON

SHACKLETON

SHACKLETON

SHACKLETON

SHACKLETON