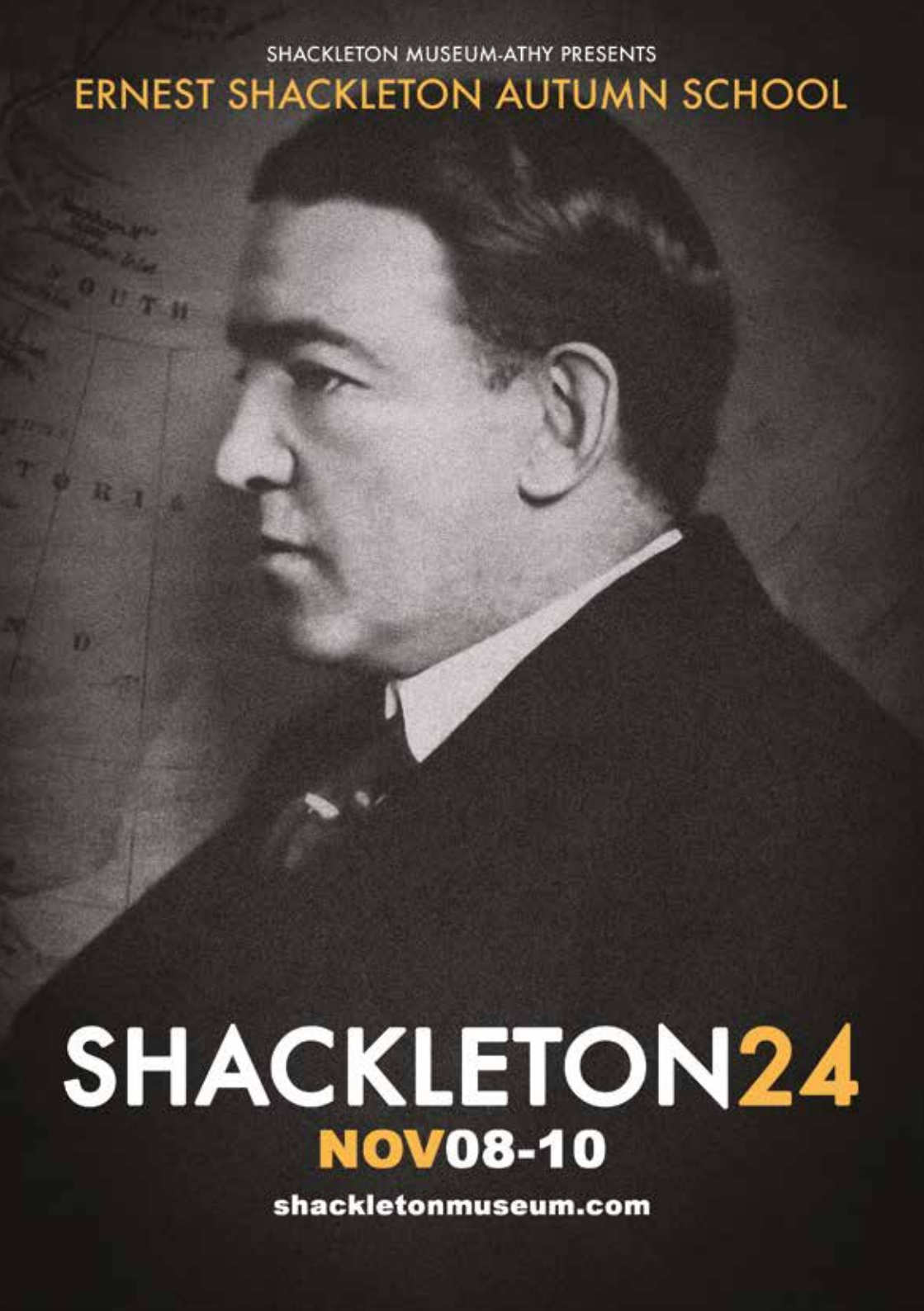


SHACKLETON MUSEUM-ATHY PRESENTS

ERNEST SHACKLETON AUTUMN SCHOOL



SHACKLETON24

NOV08-10

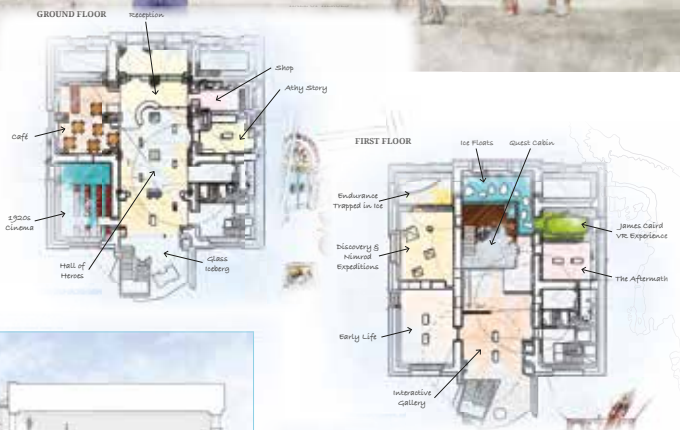
shackletonmuseum.com

THE SHACKLETON MUSEUM

Opening in 2025, the Shackleton Museum will tell the story of Ireland's legendary explorer. The 300 year old Town Hall will be transformed into a world-class visitor experience dedicated to Ernest Shackleton.

Shackleton's epic adventures will be brought vividly to life using the latest technology combined with a unique collection of polar artefacts. Join the crew of Endurance in an astounding escape from their ice-bound ship, a journey that would take them almost a year, with no man left behind. Try your hand at life in the Antarctic and see have you got what it takes to follow 'the Boss' to a frozen hell and back!

The new development will see the creation of a dedicated research wing including facilities for archive storage and study which will be available to Polar scholars across the globe. It will also address Antarctica and it's role in climate change and global geopolitics.



East Elevation



South Elevation

SHACKLETON MUSEUM

EMILY SQUARE, ATHY, CO. KILDARE, IRELAND WWW.SHACKLETONMUSEUM.COM

Friday 8th November

Master Classes with Athy Schools

The Abbey

10.30am Master Class with a Master Sculptor – Mark Richards
Mapping Antarctica – Philip Curtis
Pick up a Penguin – Primary School Polar Class

Polar Bites

The Abbey

Informal debates on polar related topics chaired by your favourite polar experts!

Daily Exhibitions

The Abbey

4.00 - 5.00pm **Session 1: The Quest for Quest – The Royal Canadian Geographical Society's discovery of the Shackleton-Rowett Expedition ship Quest**
With Jan Chojewski & Geir Kløver (Director of the Fram Museum)
Session 2: Building a Polar Library in the Digital Age
With Paul Davies (Kingsbridge Books)

Official Opening & Exhibition Launch

7.30pm by Peter Carey, Chairman of the Board of the Shackleton Museum

Exhibition: Exploring in Colour

During the Shackleton-Rowett Expedition of 1921-1922, George Hubert Wilkins made a series of colour photographs, or autochromes. With colour photography in its infancy, very few colour images were made on previous polar expeditions. This represents the only body of colour photographs, of any substance from the era. For a century, the original plates have lain in the archive of the family of John Quiller Rowett, the businessman who financed the expedition. A selection of the Wilkins Quest autochrome images will be exhibited complemented by Artefacts from the Shackleton-Rowett Expedition

Curated by Jan Chojewski & the Shackleton Museum

'ShackleTown' Market Hall

A selection of Sellers of Polar Books, Arts and Crafts.

shackletonmuseum.com

SATURDAY 9th November

Lecture Series

The Abbey

- 10.00am** "Exploration in Colour – the Colour Photography of the Shackleton Rowett (Quest) Expedition"
Jan Chojewski
- 10.50am** TEA/COFFEE
- 11.20am** "The Mapping of Antarctica"
Philip Curtis
- 12.10pm** "Empire of Ice and Stone: The Disastrous and Heroic Voyage of the *Karluk*"
Buddy Levy
- 1pm** LUNCH
- 2.30pm** "Sailor, Explorer, Writer: Frank Worsley in the Heroic Age and Beyond"
Sabina Waldron
- 3.20pm** TEA/COFFEE
- 3.50pm** "George Mallory and Everest, the Third Pole"
Peter & Leni Gillman
- 4.30pm** Icebreakers: Snapshot Presentations on Polar Matters

Dinner

The Abbey

8.00pm Autumn School Dinner

Tickets: €80

SUNDAY 10th November

Lecture Series

The Abbey

- 10.00am** "Under the North Pole: Sir George Hubert Wilkins and the Voyage of the *Nautilus*"
Laura Kissel
- 10.50am** TEA/COFFEE
- 11.20am** "Shackleton, a Hero of our time"
Peter Straughan
- 12.10pm** "The fragility of Polar Reputations – Shackleton, Scott, Rae and Mackintosh"
Joe O'Farrell
- 1pm** LUNCH

Field Trip

Assemble at The Abbey

- 2.00pm** Bus tour through Shackleton country
Including a visit to Ballitore led by Frank Taaffe (Shackleton Museum)

'Special Events' include:

- Walking Tour of Medieval Athy
'Pole to Pole' walk on the Athy Blueway

Film

The Abbey

- 2.30pm** Explorers of the World
This 1931 film produced by the American Museum of Natural History features six expeditions of the 20th Century including Byrd's 1st Antarctic Expedition and the Ross Sea party of the Imperial Transantarctic Expedition
Directed by Harold Noice



Cultural Evening

The Abbey

- 8.00pm** Endurance
The Athy premiere of the enthralling National Geographic documentary film which details the successful search for Shackleton's Endurance.
Directed by Jimmy Chin, Natalie Hewit, Elizabeth Chai Vasarhelyi

The screening will be followed by a Q and A session with the producer, Ruth Johnston.



Information on Contributors

Mark Richards

Mark Richards is a sculptor specialising in fine figurative work. His technique draws on a tradition wherein sculptors receive comprehensive instruction in design, technique and execution and work mainly on commission. He was taught by A J Ayres who, in turn, had worked with Eric Gill. His preference is to work with people and within supportive, creative environments with the often collaborative nature of working with both committees and individuals. Mark's works have a worldwide footprint; in Ireland – Nicky Rackard (Wexford), Big Tom (Monaghan), Roger Casement (Dun Laoghaire), 'Squires' Gannon (Kildare) and of course his landmark statue of Ernest Shackleton unveiled in Athy, 30th August 2016, the centenary of the rescue of the Endurance crew from Elephant Island.

Philip Curtis

Philip Curtis joined the auctioneers Christie's in 1984, becoming Head of the Map Department two years later. In 1992 he became Director of The Map House in Knightsbridge, London. Established in 1907, The Map House is the oldest and largest specialist antique map sellers in the world. While having a deep passion for all things cartographic, Philip has always been particularly fascinated with the charts of the discovery and mapping of "Terra Australis Incognita", the Unknown Southern Land. In 2012 he co-wrote *The Mapping of Antarctica* which focused on the maps from the Heroic Age of Antarctic Exploration and the extraordinary stories and people behind them. He is very proud that this book, on sale in the UKAHT shop in Port Lockroy, made him, if only briefly, the best-selling author across an entire continent!

Jan Chojecki

Jan Chojecki is the grandson of the businessman and philanthropist John Quiller Rowett, the financier of the Shackleton-Rowett (*Quest*) Expedition. Jan is the author of *The Quest Chronicle*, published in 2022, the first book in almost a century to cover the events and circumstances of the final expedition of Sir Ernest Shackleton. Jan has also published a book containing the World War 1 letters of his great uncle, in *We Are All Flourishing – the Letters and Diary of Captain Walter JJ Coats MC, 1914–1919*. Covering the entire period of the war, it gives a comprehensive and personal account of life on the front line with the infantry battalion the Glasgow Highlanders. Jan is a bio-scientist by training and has spent his career working in public sector technology transfer and early stage technology investment.

Peter Carey

Peter Carey retired as Chief Executive of Kildare County Council in April 2021 and is the chairman of the board of the Shackleton Museum. He has been a constant supporter of the Shackleton initiative in Athy, and his support for various landmark achievements was pivotal, including obtaining the cabin in which Ernest Shackleton died, and securing the funding for the redevelopment of Athy Heritage Centre as the world class Shackleton Museum. Peter brings a wealth of experience in the workings of local administration in Ireland, and the delivery of projects with social, economic and cultural dividends. He is also an avowed Shackleton fan

Peter & Leni Gillman

Peter and Leni Gillman are a writing partnership who have produced numerous books and articles. Their biography of *George Mallory; The Wildest Dream*, published in 2000, won that year's Boardman Tasker Award for Mountain Literature. They have edited several Everest anthologies, most recently a selection of photographs and texts from the expeditions of the 1920s, 1930s and 1953, which was published by the Royal Geographical Society and the Folio Society in 2022. This year, Peter contributed to the RGS volume *Everest 1924*, published for the centenary of the 1924 expedition. Peter is a keen walker who completed the round of the Scottish Munros in 1997 and, after a revised list had been produced, climbed the new peaks in 2009 and 2010. Peter and Leni have two children and four grandchildren. They have been married for 61 years – their 62nd anniversary is on 2 November 2024.

Laura Kissel

Laura Kissel is the Polar Curator for the Byrd Polar and Climate Research Center Archival Program, a position that she has held since 1996. She has a bachelor's degree from The Ohio State University and a master's degree from Kent State University (Ohio). The Polar Archives holds hundreds of collections, including the Papers of Admiral Richard E. Byrd and Sir George Hubert Wilkins. Laura's primary responsibilities include assisting the many researchers and scholars who use the collections, as well as donor relations, exhibitions, and other education and outreach activities.

Buddy Levy

Buddy Levy is the author of nine nonfiction books, most recently *Empire of Ice & Stone: The Disastrous and Heroic Voyage of the Karluk*. Buddy has written two other books on the subject of polar exploration, including *Labyrinth of Ice: The Triumphant and Tragic Greely Polar Expedition*; and the forthcoming (Jan '25) *Realm of Ice and Sky: Triumph, Tragedy, and History's Greatest Arctic Rescue*, which chronicles the first attempts to reach the North Pole by dirigible. Levy was co-star of HISTORY Channel's TV series DECODED and he frequently appears as an on-camera expert guest on a slate of HISTORY Channel television programming. As a freelance journalist he has covered adventure/expedition subjects around the world, including in Argentina, Borneo, Greenland, Morocco, the Philippines, and Svalbard. His interests are wide-ranging, often detailing riveting human stories of survival. He lives in Idaho, USA.

Joe O'Farrell

Joe O'Farrell, a longtime member of the Shackleton Autumn School committee, is a recognised authority on the history of Polar exploration – the personalities involved and the expeditions in which they participated. He has travelled widely in pursuit of his general interest in personalities who pushed the boundaries of geography, politics and exploration including characters such as T.E. Lawrence and a range of Antarctic and Arctic explorers. Joe had researched and written papers for various publications including the *Nimrod* journal. He has presented on related topics internationally, and in recent years is to be found lecturing aboard Antarctic cruise ships.

Peter Straughan

Peter Straughan is an award-winning playwright and screenwriter, originally from the North East of England. His films include *The Men Who Stare At Goats*, *The Debt*, *Tinker Tailor Soldier Spy* (Best Adapted Screenplay BAFTA, Best British Film BAFTA, Best Adapted Screenplay Academy nomination), *Frank* (Best Screenplay British Independent Film Award) *Our Brand Is Crisis*, *The Goldfinch* and *Wolf Hall* (Best Drama BAFTA, Best Mini-Series Golden Globe). Upcoming work includes the film *Conclave* and *The Mirror and The Light* – the sequel to *Wolf Hall* – and the George Harrison biopic for the forthcoming Beatles Films to be directed by Sam Mendes.

Sabina Waldron

Sabina Waldron is a history enthusiast who splits her time between land and sea, working as a translator and professional sailor. This past spring she was given the opportunity to work on the barquentine Antigua sailing around Svalbard, putting a nice feather in her cap after several years reading, writing, and thinking about nothing but polar exploration. Originally from the northeast United States, she now lives in Germany and the Netherlands.

Ruth Johnston

Ruth Johnston is an award-winning producer and executive producer of films ranging from Oscar winner *Summer of Soul* and Oscar nominees *Hunger* *Ward* and *Lead me Home* to festival favourites *Reason I Jump* and *Master of Light*. She's a veteran producer behind hundreds of hours of film, television and interactive digital media projects, including the multiple Emmy winning *Cash Cab*. Most recently, she worked as producer on *Endurance* for National Geographic Documentary Films. In 2021 she co-founded Consequential, a production and consultancy company operating at the intersection of storytelling and social change. On downtime, Ruth is an avid traveller, and a certified rescue diver and sailor. Originally from Donegal, Ruth lives with her family in the Pacific Northwest.

Sharon Greene

Sharon Greene is an archaeologist and occasional historian who grew up knowing Shackleton's birthplace as the home of her aunt and uncle. Her interest in the Shackleton sisters began when it emerged that her grandmother had met Eleanor Shackleton on a visit to Kilkea in 1959 Asked to present an 'Icebreaker' about the visit at the Shackleton Autumn School, Sharon decided she had to find out more about this woman – a decision that started a fascinating voyage of discovery about a family of remarkable women who have until now been overshadowed by their more famous brother. Sharon has a doctorate in archaeology and was formerly the editor of *Archaeology Ireland* magazine.



Mary Leadbeater's House in Ballitore.



Shackleton Mural in Athy.



"Nimrod"
Vol 18
will be on
sale

The Ernest Shackleton Autumn School

is a project of Shackleton Museum.

For information and booking contact:

Shackleton Museum,

Town Hall, Emily Square, Athy, Co. Kildare. R14 KW65

Tel: 059 - 8633075.

Email: info@shackletonmuseum.com

Website: www.shackletonmuseum.com

ALL EVENTS INCLUSIVE FEE

Full Autumn School: €250 • Saturday Day Ticket: €95 • Sunday Day Ticket: €65 • Dinner: €80

The Museum and its Shackleton School team would like to thank our funding bodies and sponsors whose support makes this event possible.

SHACKLETON

EMILY SQUARE, ATHY, CO. KILDARE, IRELAND WWW.SHACKLETONMUSEUM.COM



Kildare County Council

dataprint.ie