

SHACKLETON MUSEUM - ATHY PRESENTS

22<sup>nd</sup>

# Shackleton

autumn school

28<sup>th</sup> - 30<sup>th</sup> Oct 2022

LECTURES - EXHIBITIONS - DINNER - FILM - BUS TOUR

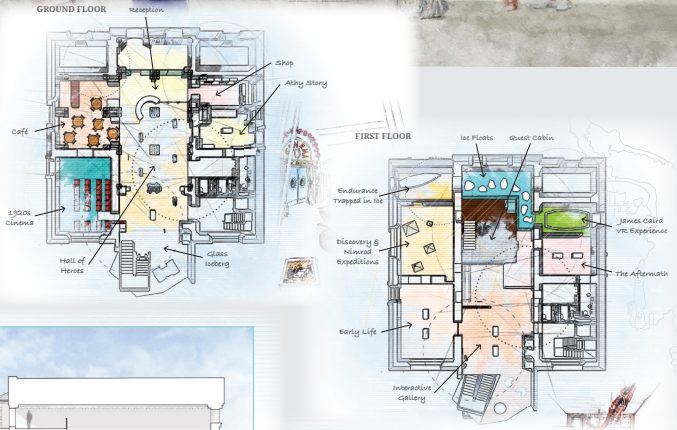


## THE SHACKLETON MUSEUM

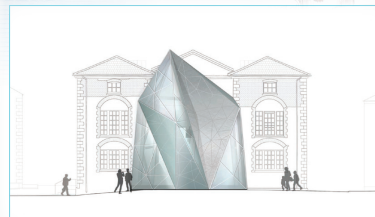
Opening in 2024 the Shackleton Museum will tell the story of Ireland's legendary explorer. The 300 year old Town Hall will be transformed into a world-class visitor experience dedicated to Ernest Shackleton.

Shackleton's epic adventures will be brought vividly to life using the latest technology combined with a unique collection of polar artefacts. Join the crew of Endurance in an astounding escape from their ice-bound ship, a journey that would take them almost a year, with no man left behind. Try your hand at life in the Antarctic and see have you got what it takes to follow 'the Boss' to a frozen hell and back!

The new development will see the creation of a dedicated research wing including facilities for archive storage and study which will be available to Polar scholars across the globe. It will also address Antarctica and the global geopolitical and climate changes we all face



East Elevation



South Elevation

# SHACKLETON MUSEUM

EMILY SQUARE, ATHY, CO. KILDARE, IRELAND [WWW.SHACKLETONMUSEUM.COM](http://WWW.SHACKLETONMUSEUM.COM)

## FRIDAY 28<sup>th</sup> October

**'A Master Class with a Master Sculptor'** Shackleton Museum

**10.00am** Sculptor Mark Richards who created Athy's acclaimed Shackleton statue will conduct a workshop with Leaving Certificate Art students from local schools.

## Official Opening

7.30pm Performed by Seán Ó Fearghaíl, TD,  
Ceann Comhairle of Dáil Éireann.

## Book Launch

**8.00pm** Shackleton Museum



*In association with the Harvest Press, the Shackleton Autumn School is pleased to host the launch of Antarctic Affair by Fergus O'Gorman.*

**9.00pm** O'Brien's Pub, Emily Square



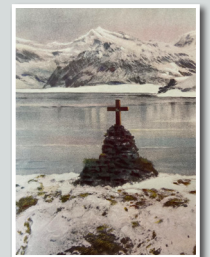
*In association with McGill-Queens University Press the Irish launch of May we be Spared to meet on Earth: Letters of the Lost Franklin Expedition by Russell Potter, Regina Koellner, Peter Carney and Mary Williamson.*

## Daily Exhibitions

Shackleton Museum

### "Shackleton – Death and Memory"

The exhibition, held in association with the South Georgia Museum focuses on Sir Ernest Shackleton's death and commemoration. The exhibition is complemented by artefacts from the Museum's own and private collections.



### "The Endurance Drawings"

Crew portraits of the Imperial Trans-Antarctic Expedition by Medbh Gillard.

## SATURDAY 29<sup>th</sup> October

### Lecture Series

Shackleton Museum

**10.00am** **"Shackleton by numbers, an introduction to Ernest Shackleton"**  
*Kevin Kenny*

**10.50am** **TEA/COFFEE**

**11.20** **"Roald Amundsen at 150 – Then and Now"**  
*Geir O. Kløver*

**12.10** **"Endurance Found!"**  
*Mensun Bound*

**1.00pm** **LUNCH**

**2.30pm** **"What Ernest Shackleton can teach us about Resilience and Leadership in an Age of Climate Crisis"**  
*Sadbh O'Neill*

**3.20pm** **TEA/COFFEE**

**3.40pm** **"May we be Spared to meet on Earth: Letters of the Lost Franklin Expedition"**  
*Russell Potter, Peter Carney and Mary Williamson.*

**4.30pm** **Icebreakers**

### Dinner

The Green Barn, Burtown House, Athy

**8.00pm** **Autumn School Dinner**



Ernest Shackleton and men at Ocean Camp, 1915.

## SUNDAY 30<sup>th</sup> October

### Lecture Series

Shackleton Museum

**10.00am** **"Snow Widows: Scott's Fatal Antarctic Expedition through the eyes of the women left behind"**  
*Katherine MacInnes*

**10.50am** **TEA/COFFEE**

**11.20am** **"Finding your South Pole"**  
*Astrid Furholt*

**12.10pm** **"A Life on Thin Ice"**  
*Doug Allan*

**1.00pm** **LUNCH**

### Field Trip

Assemble at the Shackleton Museum

**2.00pm** **Bus tour through Shackleton country**  
*including a visit to Ballitore led by John MacKenna (co-author of An Irishman in Antarctica) and Frank Taaffe (Shackleton Museum).*

### Film

Athy Arts Centre

**8.00pm** **Shackleton's Cabin**  
*The Athy premiere of the enthralling documentary produced by Moondance Productions documenting conservator Sven Habermann's journey of discovery in restoring the deck cabin from Ernest Shackleton's last ship RYS Quest. The screening will be followed by a Q & A session with Sven Habermann and Shane Brennan.*



**Directed by Shane Brennan**

## Information on Contributors

### Mark Richards

Mark is a sculptor specialising in fine figurative work through the tradition of *architectural sculpture*. He was taught by A J Ayres who, in turn, had worked with Eric Gill; other exponents of the tradition include Sargeant Jagger. Mark's works can be found all over the world. His most recent commissions have included his acclaimed statue of Shackleton, unveiled in Athy in 2016, the Irish patriot Roger Casement in Dún Laoghaire and 'Squires' Gannon in Kildare.

### Fergus O'Gorman

Fergus was a research biologist with the British Antarctic Survey in Antarctica from 1957-1960. After working for the United Nations as head of Wildlife in Rome he returned to Ireland lecturing in both Trinity College Dublin and University College Dublin where he established the first World Heritage Management and Conversation Masters programme in Ireland. He lives in Dalkey with his partner Denise Comerford

### Kevin Kenny

A native of County Kildare, Kevin is a board member of the Shackleton Museum and an organiser of the Shackleton Autumn School. He has lectured widely on Shackleton and has contributed to a range of projects aimed at raising awareness of Shackleton and his achievements

### Geir. O Kløver

Geir has been the director of the Fram Museum in Oslo since 2005. He has edited and published the diaries of Roald Amundsen and 14 of the other crew members of the Norwegian South Pole Expedition 1910-12. His most recent publication *The Nansen Photographs* received the William Mills prize for Non-Fiction Polar Books. From 1997 to 2005, Geir worked as project director in a Norwegian human rights NGO working primarily on projects related to Tibet, Burma, East Timor, the Korean peninsula and the AIDS issue.

### Mensun Bound

Born in the Falkland Islands Mensun is a maritime archaeologist engaged in deep ocean archaeology. In 2019 he located the German battleship SMS *Scharnhorst* 105 years after her sinking in the Battle of the Falklands Islands. He was the director of exploration in the 2019 search for Shackleton's *Endurance* and returned again in 2022 aboard the S.A. *Agulhas II* which found *Endurance*. The Discovery Channel has called Bound 'the Indiana Jones of the Deep'.

### Sadbh O'Neill

A lecturer and researcher in climate ethics, climate policy and governance and environmental politics Sadbh is an assistant professor in Dublin City University's, School of Law and Government. She is also a member of the advisory committee of Environmental Protection Agency.

### Russell A. Potter

Russell A. Potter is professor of English and media studies at Rhode Island College, USA and the author of *Finding Franklin: The Untold Story of a 165-Year Search*. He is the host of the popular website – Visions of the North – focusing on the 1845 Arctic expedition of Sir John Franklin

### Peter Carney

Peter Carney writes the *Erebus* and *Terror* Files blog and has had a lifelong interest in archaeology. He lives in Hastings, UK.

### Mary Williamson

Mary Williamson is a descendent of Sir John Franklin and custodian of the family's private archive. She lives in East Sussex, UK

### Katherine MacInnes

Formerly an arts journalist Katherine has written features for *Country Life*, *The Times* and *Telegraph*. She has written a number of childrens books and her most recent publication is *Snow Widows* described in one review as 'a gripping and remarkable feat of historical reconstruction. She has given talks on the invisible women behind polar exploration at the Royal Geographical Society, at history and literature festivals and on BBC Radio. She is a member of the Society of Authors and the Biographers' Club.

### Astrid Furholt

Astrid is a Norwegian nurse who in 2017/18 became the first woman to follow the route of Roald Amundsen to the South Pole. She has crossed the Greenland icecap, traversed Spitsbergen, and is of very few to have crossed the Campo Hielo Northe glacier in Patagonia. Her drive comes from a word of a dying man who told her to "live while she is alive". She has an eye for details, has developed her own methods, always learning from those who went before.

### Doug Allan

A wildlife cameraman and photographer with 35 years of experience in the Arctic and Antarctic who Sir David Attenborough has described as 'immune to most of the limitations that govern other humans'. His work has featured in television productions such as *The Blue Planet*, *Planet Earth* and *Life*. His book *Freeze Frame* is an account of his life and work in the Polar Regions.

### Sven Habermann

Sven is the manager and co-founder of Conservation Letterfrack, based in Connemara, the pre-eminent conservation lab for furniture, wooden artefacts and architectural woodwork in Ireland. Among his recent projects were the restoration of the stretcher of the National Gallery of Ireland's 'Marriage of Strongbow and Aoife' and Shackleton's deck cabin from R.Y.S *Quest*.

### Shane Brennan

Shane is the founder and MD of Moondance Productions, a television production company based in Dublin specializing in factual, reality and documentary series. He recently released, to broad acclaim, Shackleton's Cabin, an account of the restoration of Shackleton's deck cabin from R.Y.S *Quest*.

### Medbh Gillard

Born in Galway, Medbh is an Artist who lives and works in Sligo. Her recent work includes 'The Endurance Drawings' a series of charcoal portraits of Shackleton and the men of the Imperial Trans-Antarctic Expedition using archive photographs.





Mary Leadbeater's House in Ballitore.



Shackleton Mural in Athy.



**"Nimrod"**  
**Vol 16**  
will be on  
sale.

## The Ernest Shackleton Autumn School

is a project of Shackleton Museum.

*For information and booking contact:*

**Shackleton Museum,**

Town Hall, Emily Square, Athy, Co. Kildare.

Tel: 059 - 8633075.

Email: [info@shackletonmuseum.com](mailto:info@shackletonmuseum.com)

Website: [www.shackletonmuseum.com](http://www.shackletonmuseum.com)

ALL EVENTS INCLUSIVE FEE

Full Autumn School: €170, Lectures: €12, Dinner: €60, Icebreakers: €5, Field Trip: €15, Film: €15.

The Museum and its Shackleton School team would like to thank our funding bodies and sponsors whose support makes this event possible.

# SHACKLETON

EMILY SQUARE, ATHY, CO. KILDARE, IRELAND [WWW.SHACKLETONMUSEUM.COM](http://WWW.SHACKLETONMUSEUM.COM)



An Roinn Turasóireachta, Cultúir,  
Ealaíon, Gaeltachta, Spóirt agus Meán  
Department of Tourism, Culture,  
Arts, Gaeltacht, Sport and Media



Kildare County Council